

Site Unseen

Devised and performed by Gillian Dyson

Site Unseen

Devised and performed by Gillian Dyson

About

The audience enters an empty room. A woman begins by defining the space in placing two 'chapel chairs'. A humming harmony fills the room as the woman sets spinning tops in motion. Then, standing on a chair, the woman begins to vocalize; speaking in tongues. After some time, she descends from the chair and mutes her voice by filling her mouth with pebbles.

Background

Site Unseen has grown from starting point of voices speaking in tongues; spiritual channeling; the utterings of lunatics; the poetry of scat.

The work has grown from a notion of trace, a haunting suggestion of inherent protest embodied in the most inanimate. *Site Unseen* explores a sense of lost voices or 'ghosting' as revealed through the activation of space, object and body. It works with the signifiers and markers of ordinariness. The audience comes together as witness. It is a collective exploration animated by the artist's actions; the object action expressing different meaning at different moments, to different individuals.

Commissioned for and premiered at the National Review of Live Art, New Moves, Glasgow 2010. Also performed for Live Stock, Leeds 2011.

This beautiful and haunting performance truly captured Gillian's interest in the relationship between space and material objects, and between memory and the evocative power of sound. Her ability to instill in her audience a sense of nostalgia and longing through the simplest of actions makes her work unique; an approach to performance to be admired.

Kate Craddock – Director of GIFT

Technical

Site Unseen is an approximately 45 minute live performance, involving one performer (the artist).

No specialist lighting is necessary, though may be agreed – subject to venue.

All 'props' are provided by the artist.

The work can be presented in a gallery or studio context, or a less structured site.

The artist will develop the work in response to specific sites or contexts.



Images from the performance at NRLA, and Live Stock Leeds. © G Dyson 2010

About

Gillian Dyson makes thought provoking and engaging live, video and installation art that address issues of site, body and memory.

Based in Hull, East Yorkshire, Dyson has performed and exhibited throughout the UK and worldwide. (Including Vivid, Birmingham; Taidehalla Helsinki; Arnolfini Bristol; Art Space Sydney; Asiatopia Bangkok; ANTI Festival Kuuopio).

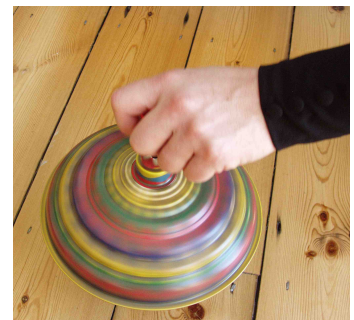
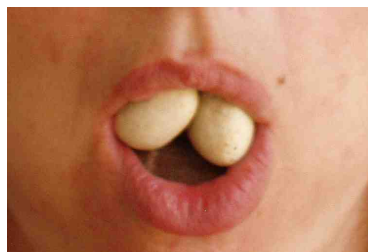
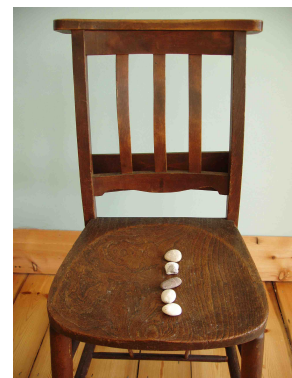
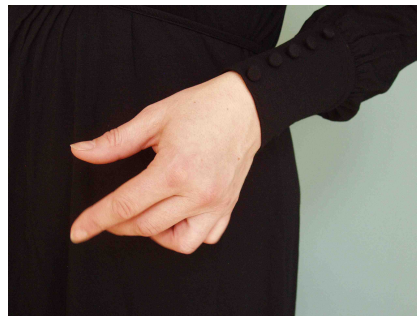
Whilst Dyson has presented in the 'white box' of the gallery, and the 'black box' of the studio theatre she is often commissioned to respond to the specifics of international performance festival, and frequently works in a site-specific condition; responding to the history and ambience of particular spaces and sites.

In 2010 Dyson was commissioned by The Beacon Art Project to create '*Still Life*', a site-specific response to a Georgian House in Louth, Lincolnshire. Dyson worked with the curators of the Louth Museum to re-appropriate found and archive 'bric-a-brac' into a still life exhibition. The audience attending the 1-day event were invited to draw the still life, exploring the 'bringing to life' of the disused heritage site and a sense of place.

Dyson's own creative work is informed by her professional engagement with members of the public in community contexts, her practical projects with and mentoring of students and her management of exhibitions and events.

Contact

Gillian Dyson
gilliandyson@yahoo.co.uk
www.gilliandyson.co.uk
+44 (0)778 651 31 75



Studio rehearsal images by the artist © G Dyson